

Bladder

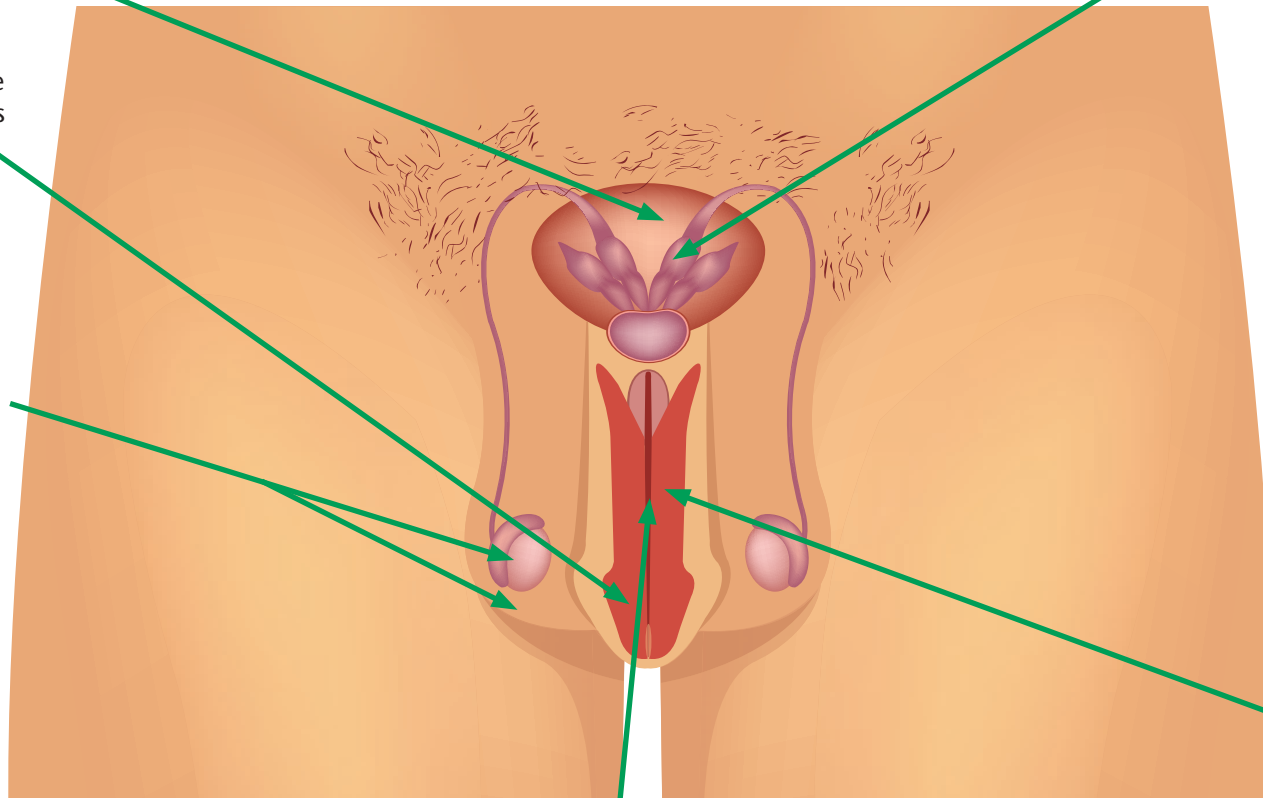
The bladder collects urine from the kidneys before disposal by urination.

Seminal Vesicle

A pair of small tubular glands that produce fluid, which makes up part of semen

Glans

The sensitive structure at the top of the penis



Scrotum / Testicles / Testes

You have two testicles / testes (held inside a bag of skin called a scrotum). They make sperm and hormones.

Penis

This is used to pee and for penetrative sex. The size and shape of a penis can vary from man to man and an un-erect penis is smaller than an erect penis.

Urethra

Sperm duct and glands

The sperm duct is just below your bladder and carries sperm from the testes to the urethra. As sperm passes through the sperm duct it mixes with fluids produced by glands. This mixture is called semen.

Bladder

The bladder collects urine from the kidneys before disposal by urination.

Urethra

The tube inside your penis that carries urine from the bladder to outside your body and carries semen when you ejaculate.

Prostate Gland

Produces a thick white fluid called semen that mixes with the sperm produced by the testes.

Foreskin

The skin which covers the tip of your penis. Foreskins can be different sizes. Some can be pulled far down from the tip of the penis and others just a small bit. Some men have this removed for religious or medical reasons.

Testicles / Testes

You have two testicles / testes (held inside a bag of skin called a scrotum). They make sperm and hormones.

